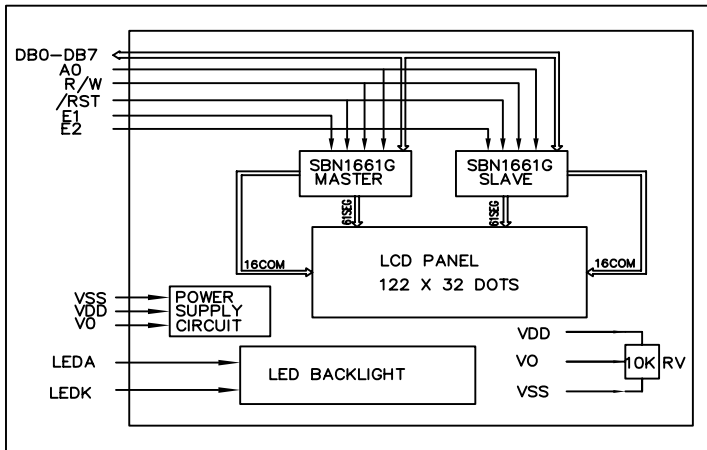


ITEM	SYMBOL	MIN.	MAX.	UNIT
Power Supply(VDD)	V _{DD}	-0.3	7.0	V
Input Voltage	V _i	-0.3	V _{DD} +0.3	V
Operating Temp.	T _{opr}	-20	+70	°C
Storage Temp.	T _{stg}	-30	+80	°C

ITEM	STANDARD VALUE
Display Type	122 x 32 Dots
LCD Type	STN(Blue/Yellow-Green/Gray) ; FSTN
Drive Method	1/32Duty, 1/5Bias, VOP 4.7V
Viewing Angle	6 O'clock ; 12 O'clock
Backlight Color	White ; Yellow-Green
Control IC	SBN1661G

Driver Diagram



PIN DESCRIPTION			
PIN	SYMBOL	LEVEL	FUNCTION
1	VDD	H	Power Supply For Logic
2	VSS	0V	Ground
3	V0	--	Power Supply For LCD
4	RST	L	Reset Signal
5	E1	L	Chip2 Enable Signal
6	E2	L	Chip2 Enable Signal
7	RW	H/L	H:Read L:Write
8	A0	H/L	H:Data L:Instruction Code
9-16	DB0-DB7	H/L	Data Bus
17	LEDA	H	Backlight Anod
18	LEDK	L	Backlight Negative